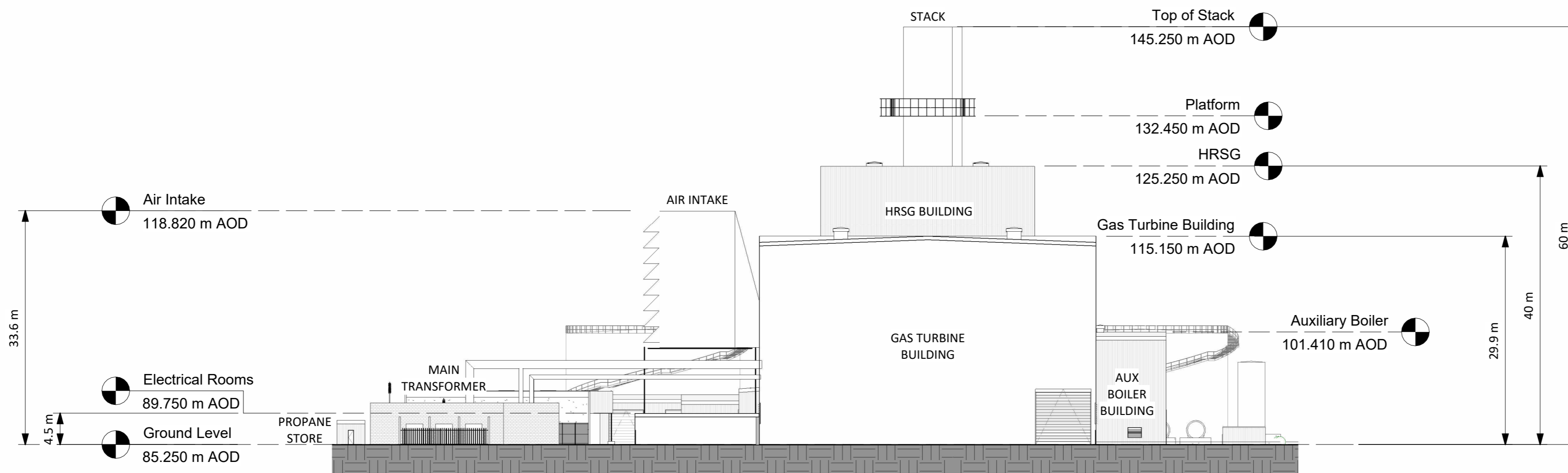
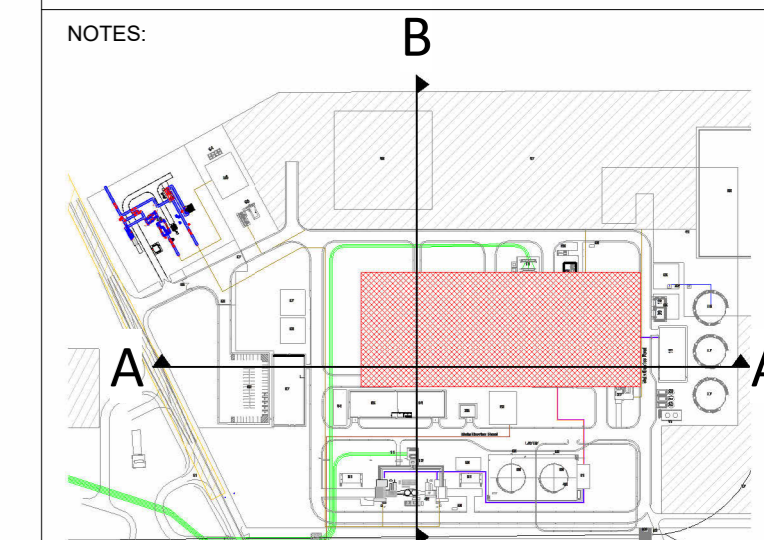


**1 CCGT Section A-A**  
1 : 500



**2 CCGT Section B-B**  
1 : 500



**Key Plan B**  
1 : 6000

- NOTES:
- Building colours will range within a muted mid-dark grey and green spectrum. Refer to EIA Vol. II, Appendix 10A for detail
  - Final detail of building finishes to be agreed with planning authority in advance of development commencing

|      |                     |       |      |     |          |
|------|---------------------|-------|------|-----|----------|
| R1.0 | FOR PLANNING        | DTW   | AO1  | BAB | 26.01.24 |
| REV. | DETAILS OF REVISION | DRAWN | CHKD | APR | DATE     |

**FICTNER**  
CONSULTING ENGINEERS LIMITED  
7 Sir John Rogerson's Quay, Block C,  
Grand Canal Docklands,  
Dublin 2, D02 VK60  
Tel: +353 (1)506 0632  
Website: www.fichtner.ie

CLIENT: **Bord na Móna Powergen Limited**

SITE:

PROJECT: **Derrygreenagh Power**

TITLE: **CCGT CROSS SECTIONS**

|                 |              |
|-----------------|--------------|
| DRAWING STATUS: | For Planning |
| DRAWN BY:       | DTW          |
| CHECKED BY:     | AO1          |
| APPROVED BY:    | BAB          |
| DATE:           | 26.01.24     |

OFFICE OF ISSUE: **DUBLIN**  
SHEET SIZE: **A1** | SCALE: 1:100  
DRAWING No.: **S7060-8050-0038** | REVISION: **R1.0**

